

★ WELCOME! ★

On behalf of Splash! Publications, we would like to welcome you to *Missouri*, one of 50 State History lessons. This lesson was designed by teachers with you and your students in mind.

THE FORMAT

We've created a color and black line version of this lesson. Use the color version for your White Board and the black line masters to make copies for your students. Our goal is a lesson that you can use immediately. No comprehension questions to write, activities to create, or vocabulary words to define. Simply make copies of the lesson for your students and start teaching.

THE VOCABULARY

Our lessons feature words in bold type. We have included a Glossary to help students pronounce and define the words. Unlike a dictionary, the definitions in the Glossary are concise and written in context. Remember, we're teachers! Students will be exposed to these vocabulary words in the comprehension activities. They will also be tested on the vocabulary words at the end of the lesson.

NOTE: The answers to all activities and quizzes are at the end of the lesson.

INTERACTIVE HISTORY NOTEBOOK

In addition to other higher-level Common Core aligned activities, we have included step-by-step directions for three Interactive Notebook activities that students will create and glue into a history notebook. When finished, the history notebook will provide students with a long lasting Missouri history reference. A composition book works well for keeping the Interactive Notebook activities.





CORE STANDARDS: THE “BIG IDEAS”

Core Standards help teachers prioritize instruction and connect the “big ideas” students need to know in order to advance. As a reading-based lesson, *Missouri* fosters literacy in Social Studies.

At the same time that students are learning important factual content about *Missouri*, they are meeting the Common Core Standards for English Language Arts and making connections to the “big ideas” in American History. Below is the legend used to abbreviate the Common Core Strands:

COMMON CORE STRAND CODE:

CC = COMMON CORE

RL = READING-LITERATURE

RI = READING INFORMATIONAL TEXT

RF = READING FOUNDATIONS SKILLS

W = WRITING

SL = SPEAKING LISTENING

L = LANGUAGE

THE COPYRIGHT

Text Copyright © 2003-Revised Edition 2015 by SPLASH! Publications, Glendale Az

Illustration Copyright © 2003 by SPLASH! Publications, Glendale Az

All rights reserved. No part of this publication may be reproduced or transmitted in any form by any means, electronic or mechanical, including photocopy, recording, or any information storage or retrieval system without permission in written form from the publisher. Pages in this *Missouri* lesson may be reproduced by the original purchaser only for use in the original purchaser’s classroom and may not be sold or used for purposes other than those specifically permitted by the publisher.

Illustrations and cover design by Victoria J. Smith

RATE THIS UNIT

We value your opinion! Please take the time to rate this unit and tell us and other teachers what you think about it.

Follow Us

We are creating and posting new units and lessons on a daily basis. If you like what you see in this unit, click on the Follow Me button so you will be the first to know when we post something new.



★ LESSONS *at a* GLANCE ★

THE LESSON PLAN

Before reading Missouri, students will:

- follow directions to create Vocabulary Organizers to glue into their Missouri history notebooks for ***abolished, capital, debate, expansion, extinct, gorges, Great Britain, independence, interpreter, keelboat, livestock, motto, native, neutral, outlaws, pioneers, plantations, raids, Revolutionary War, segment, surrendered, tourist, welfare, wetlands.***

After reading Missouri, students will:

- answer Missouri Reading Comprehension Questions.
- complete Missouri Language Skills.
- use a Content Web to write a paragraph about Missouri's points of interest.
- follow directions to create an Interactive Time Line to glue into their Missouri history notebooks that illustrates eight important events in Missouri's history.
- answer questions about Missouri and then follow directions to create a History Cube to glue into their Missouri history notebook.
- take a Vocabulary Quiz for Missouri.

THE MISSOURI LESSON IS ALIGNED WITH THESE 5TH GRADE CORE STANDARDS:

CC.5.RI.4, CC.5.RI.7, CC.5.RI.10, CC.5.RF.3A, CC.5.RF.4A, CC.5.RF.4C, CC.5.W.2A, CC.5.W.2B, CC.5.W.2C, CC.5.W.2D, CC.5.W.2E, CC.5.W.5, CC.5.W.6, CC.5.W.7 CC.5.L.4A, CC.5.L.4C, CC.5.L.6

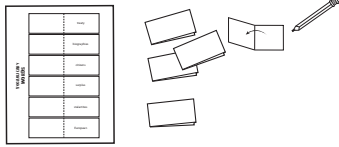
VOCABULARY ORGANIZERS

There are many new vocabulary words to learn before beginning your study of Missouri. Your Missouri history notebook is a great place to record and store the words and definitions that you will need to be familiar with during this lesson.

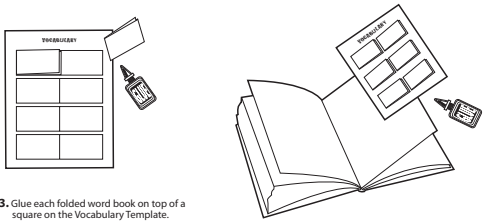
Directions: Choose the next four face-to-face blank pages in your Missouri history notebook. Using the Glossary provided by your teacher and the Vocabulary templates, follow the directions below to create and glue four Vocabulary Organizers securely into your history notebook.



1. Cut each Vocabulary Template along all bold lines.



2. Cut out all the vocabulary words along the bold lines and fold along the dotted lines. Open each vocabulary word book and write the definition inside.



3. Glue each folded word book on top of a square on the Vocabulary Template.

4. Glue each completed Vocabulary Template into your notebook.

Missouri © 2003-Revised 2015
splashpublications.com



VOCABULARY WORDS

plantations

surrendered

motto

tourist

wetlands

debate

Missouri © 2003-Revised 2015
splashpublications.com



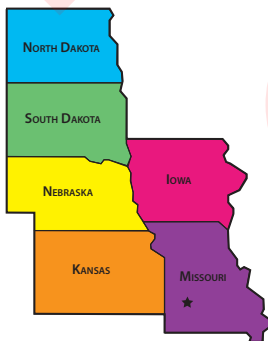
Missouri, the Show Me State, is a Great Plains state located in the Middle West region of the United States. It was nicknamed the Show Me State because a famous Missouri congressman refused to believe what others told him. He demanded to be "shown" the facts.

Missouri was once known as the Gateway to the West because both the Santa Fe Trail and the Oregon Trail started in Missouri. These trails led **pioneers** west to New Mexico and Oregon.

Jefferson City is the **capital** of Missouri. It was named after Thomas Jefferson.

Jefferson was the author of the Declaration of **Independence** and our nation's third president. Jefferson City's location on the Missouri River makes it an important trade center for a farming region in Missouri that grows grain and fruit and raises **livestock**.

The state bird of Missouri is the Bluebird. The state flower is the Hawthorn, and the state tree is the Flowering Dogwood. Missouri's **motto** is "The **Welfare** of the People Shall be the Supreme Law."



FAST FACTS

- ★ Missouri is a Native American word that means "town of the large canoes."
- ★ The Capitol building in Jefferson City has been rebuilt three times because of fire. The first Capitol burned in 1837. In 1911, the second Capitol burned when the dome was struck by lightning.
- ★ The Flowering Dogwood is a **native** tree to the eastern United States. It features small greenish-yellow flowers. In the fall, its leaves turn red and the tree bears bright red berries.

Missouri © 2003-Revised 2015
splashpublications.com



FRENCH CONTROL OF MISSOURI

In 1682, French explorer Robert La Salle officially claimed the entire area from the Mississippi River to the Gulf of Mexico for France. He named this region Louisiana, in honor of King Louis XIV. The French were not interested in establishing permanent settlements in Missouri. They entered the area to trap beaver and trade furs with the Native Americans. They also mined for lead and salt. The first permanent settlement in Missouri wasn't established until the late 1740s.

THE LOUISIANA PURCHASE

In 1803, the United States purchased the Louisiana Territory from France. The northern part of the territory was called Upper Louisiana. This region included the present-day state of Missouri. There were over 10,000 people already living in Missouri when the United States purchased the land from France. They included French, Spanish, and several thousand Americans who moved from Illinois to Missouri after the **Revolutionary War**.

LEWIS AND CLARK

In 1804, President Jefferson sent United States Army officers Meriwether Lewis and William Clark to explore the new territory of the Louisiana Purchase. They were expected to bring back information about the land, plants, animals, and Native Americans. More importantly, Jefferson hoped that Lewis and Clark would return with news about a water route that connected the Mississippi River with the Pacific Ocean.



LEWIS AND CLARK

PREPARING FOR THE JOURNEY

Lewis and Clark chose about 50 skilled woodsmen and hunters to join them on the expedition. Before leaving on the journey, Lewis and Clark spent the winter training the men.

They learned about the wilderness they were about to explore from fur traders who had explored the territory before them. Lewis and Clark planned to travel up the Missouri River in a **keelboat**

and two dugout canoes. The keelboat carried food, medicine, scientific instruments, weapons, and gifts for the Native Americans.

Missouri © 2003-Revised 2015
splashpublications.com



MISSOURI

Directions: Read each question. Darken the circle for the correct answer.

- 1 According to the second paragraph, Missouri was once known as the Gateway to the West because –
 - A the Lewis and Clark Expedition started and ended in Missouri
 - B the Santa Fe and Oregon trails started in Missouri
 - C Missouri was west of California
 - D Missouri was visited by Adam West
- 2 Lewis and Clark saw all of these things during their 8,000-mile journey except –
 - F Native Americans of the Shoshone, Mandan, and Hidatsa tribes
 - G rugged mountains and beautiful land
 - H a water route connecting the Mississippi River with the Pacific Ocean
 - J plenty of wildlife
- 3 The boxes below show events from Missouri's history.

1	2	3
The United States purchased the Louisiana Territory from France.	The Missouri Compromise settled the debate about slavery in Missouri.	

Which event belongs in the first box?

- A Missouri became state.
- B Mountain men traveled West on the Santa Fe Trail.
- C French fur trappers and traders visited Missouri.
- D Lewis and Clark left from St. Louis, Missouri.



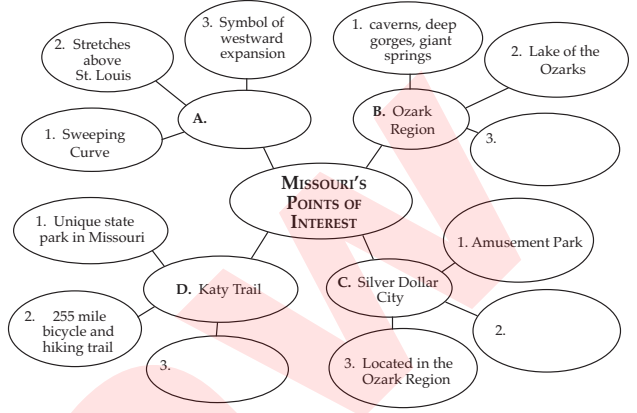
Directions: Darken the circle for the word or words that give the meaning of the underlined word.

- 4 Part of Katy Trail has been officially recognized as a segment of the Lewis and Clark National Historic Trail. Segment means –
 - F leg or arm of an animal
 - G final seconds of a race
 - H Native American dwelling
 - J part of a whole piece
- 5 Sacagawea traveled with Lewis and Clark and became the group's interpreter. An interpreter –
 - A translates speech from one language to another
 - B guides a group on trails
 - C makes maps of an area
 - D cooks food for travelers
- 6 The Gateway Arch stands as a symbol of westward expansion in the United States. Expansion means –
 - F faithful
 - G border
 - H growth
 - J more than half
- 7 Missouri's motto is "The Welfare of the People Shall be the Supreme Law of the Land." Welfare means –
 - A not caring about people
 - B being or doing well
 - C feelings of anger
 - D moving from one place to another

READING			
Answers			
1 A B C D	5 A B C D	2 F G H J	6 F G H J
3 A B C D	7 A B C D	4 F G H J	

MISSOURI

Directions: Below is a Concept Web to help you write a paragraph about Missouri's points of interest. Study the Concept Web and use it to answer questions 1-4.



- 1 Which of these belongs in Circle A?
 - A Lewis and Clark Monument
 - B The Gateway Arch
 - C McDonald's
 - D St. Louis National Park
- 2 Which of these belongs in number 3 around circle B?
 - F Branson
 - G Los Angeles
 - H St. Louis
 - J Ohio

- 3 Which of these belongs in number 2 around circle C?
 - A Childhood home of Thomas Jefferson
 - B Last stop on Oregon Trail
 - C Disneyland
 - D 1800s Ozark mining town
- 4 Which of these belongs in number 3 around circle D?
 - F Part of the Santa Fe Trail
 - G Segment of Lewis and Clark National Historic Trail
 - H First state in the Union
 - J Part of the state of Texas

LANGUAGE			
Answers			
1 A B C D	3 A B C D	2 F G H J	4 F G H J



POINTS OF INTEREST PARAGRAPH

In this activity, you will use your finished Missouri Concept Web to write a paragraph about Missouri's points of interest. A good paragraph includes a *topic sentence*, at least four *supporting sentences*, and a *closing sentence*.

Write a **topic sentence** clearly stating that you will be writing about Missouri's points of interest. A *topic sentence starts a paragraph*. Below is an example of a topic sentence for a paragraph about Lewis and Clark.

Example: *Meriwether Lewis and William Clark were brave men sent to explore the new territory of the Louisiana Purchase.*



TOPIC SENTENCE



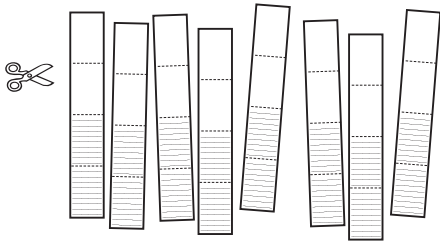
MISSOURI'S POINTS OF INTEREST



INTERACTIVE TIME LINE

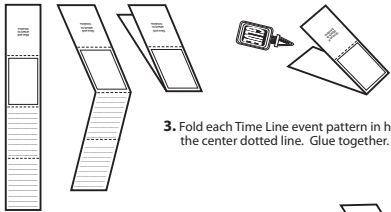
In this activity, you will use what you have learned about Missouri's history to make an Interactive Time Line that tucks securely into your Missouri history notebook.

Directions: Choose the next two blank face-to-face pages in your history notebook. Using the Missouri History lesson and the Time Line patterns, follow the directions below and on the next page to create two Interactive Time Lines.



1. Cut out the eight Time Line event patterns along the outside bold lines.

2. Use the lesson to write two facts on the lines of each Time Line event. Use correct capitalization, spelling, and punctuation.



3. Fold each Time Line event pattern in half using the center dotted line. Glue together.

4. Again, fold each Time Line event pattern in half using the dotted line.

TIME LINE EVENT PATTERNS



HISTORY CUBE

In this activity, you will use what you have learned about Missouri to make a History Cube that will tuck securely into your Missouri history notebook.

As you complete the History Cube outline, be careful to use proper *capitalization, spelling, and punctuation.*

Part I

Directions: Use the Missouri History lesson to answer each of the questions below. Write your answers on the lines of three squares on the History Cube outline.

1. What is Missouri's state bird, state flower, and state tree?
2. What is Missouri's nickname and motto?
3. Where is Missouri's capital? What is the capital's economy?

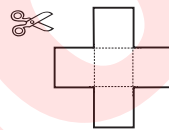
In the remaining two squares, list two interesting facts that you learned while studying about Missouri.



HISTORY CUBE

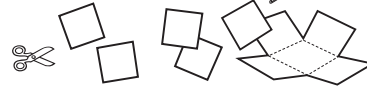
Part II

Follow the directions below to assemble and glue your History Cube onto the next blank page of your Missouri history notebook.



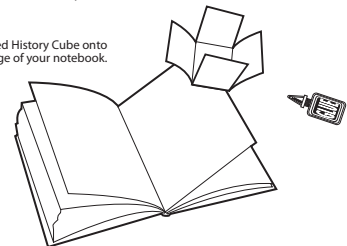
1. Cut out the History Cube pattern along the dark solid lines. Color the state outline and the letters in the name of the state.

2. Fold the pattern along the dotted lines so that the questions are on the outside.



3. Cut out the three squares with your answers to the questions on them and glue each **correct** answer on the underside of each question on the History Cube pattern. Glue one of the remaining two squares to the middle and the other remaining square on the underside of the title square.

4. Glue the completed History Cube onto the next blank page of your notebook.



5. Test out your History Cube by folding the pages in to make a square. (The title page should be on top.) Read the first question and flip the square back to reveal the answer glued underneath.

VOCABULARY QUIZ

MISSOURI

Directions: Match the vocabulary word on the left with its definition on the right. Put the letter for the definition on the blank next to the vocabulary word it matches. Use each word and definition only once.

1. ____ wetlands
2. ____ welfare
3. ____ independence
4. ____ livestock
5. ____ interpreter
6. ____ debate
7. ____ plantations
8. ____ extinct
9. ____ gorges
10. ____ abolished
11. ____ neutral
12. ____ surrendered
13. ____ tourist



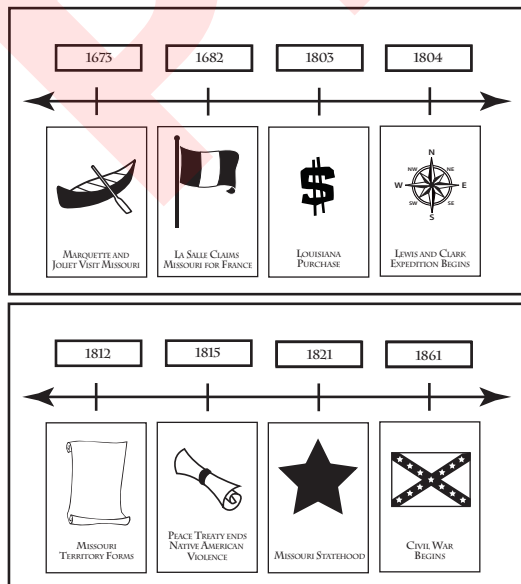
- A. the city that serves as the center of government for the state.
- B. a discussion that gives arguments for and against a subject.
- C. stretching the borders of something.
- D. no longer living.
- E. a short phrase describing conduct or principles narrow
- F. an island which includes England, Scotland, and Wales.
- G. no longer under someone else's control.
- H. someone who turns one language into another language so it can be understood by both parties.
- I. a shallow covered river boat that is usually rowed or towed and used for freight.
- J. animals that are raised on a farm to eat or sell for profit.
- K. belonging to a place because of birth.
- L. unwilling to choose sides.

GLOSSARY

- A.D.** the period in history after the birth of Christ.
- abolished** stopped or put an end to.
- admired** thought very highly of.
- allies** groups of people who come together to help one another in times of trouble.
- anti-slavery** against slavery.
- archaeologists** scientists who study past human life by looking at prehistoric fossils and tools.
- artifacts** objects and tools used by early humans for eating, cooking, and hunting.
- autobiography** the story of your life written by you.
- basin** the land drained by a river and its branches.
- biographies** stories of a person's life written by someone else.
- bi-son** buffalo.
- bound-ary** dividing line.
- burrows** holes that are dug by small animals.
- cap-i-tal** the city that serves as the center of government for the state.
- cap-i-tol** the building where the government meets to make important decisions for the state.
- cap-tive** a prisoner who has been taken by force without permission.
- car-i-bou** a large deer of northern and arctic North America that is closely related to the reindeer.
- cen-sus** a count of the number of people in a city, town, state, or country.
- cen-tu-ry** a period of 100 years.
- Civ-il War** the war fought from 1861 to 1865 between the Union and the Confederacy over the issue of slavery.
- cli-mate** the average weather conditions of a place over a period of years.
- coast** an area of land that borders water.
- col-o-nies** groups of people who are ruled by another country.
- com-ple-tion** the condition of being finished.
- com-pro-mise** an agreement reached when each side changes or gives up some of its demands.

ANSWERS

INTERACTIVE TIME LINE



ANSWERS

HISTORY CUBE

1. Missouri's state bird is the Bluebird, the state flower is the Hawthorn, and the state tree is the Flowering Dogwood.
2. Missouri's nickname is the Show Me State and its motto is "The Welfare of the People Shall be the Supreme Law."
3. Missouri's capital is Jefferson City. Jefferson City's location on the Missouri River makes it an important trade center for a farming region in Missouri that grows grain and fruit and raises livestock.

Answers will vary for the two interesting facts about Missouri.

HISTORY CUBE RUBRIC

CRITERIA	3	2	1	0	SCORE
HISTORY CUBE OUTLINE	Completed History Cube outline by answering all 3 questions correctly. Added two interesting facts.	Completed History Cube outline by answering 2 questions correctly. Added one interesting fact.	Completed History Cube outline by answering 1 questions correctly OR added one interesting fact.	Didn't attempt to complete History Cube outline.	
HISTORY CUBE ASSEMBLY	Followed directions correctly to cut and assemble History Cube in notebook.	Followed directions correctly to cut OR assemble History Cube in notebook.	Cut and assembled History Cube in notebook but clearly did not follow directions.	Didn't attempt to cut or assemble History Cube in notebook.	
CONVENTIONS capitalization, spelling, punctuation	Had less than 4 convention errors in finished History Cube.	Had 4 - 6 convention errors in finished History Cube.	Had 7-10 convention errors in finished History Cube.	Had more than 10 errors in finished History Cube.	
TOTAL					